



READY TO MOVE



HUGE SAVINGS ON DISPLAY LOT MODEL PRICED TO MOVE

Model number: 31MXR16763AH18

3 beds • 2 baths • 1216 sq.ft. • 16' width • 76' depth

Our home building facilities invest in continuous product and process improvements. Plans, dimensions, features, materials, specifications and availability are subject to change without notice or obligation. Renderings and floor plans are representative likenesses of our homes and may differ from the actual homes. We invite you to tour a Home Center near you and inspect the highest value in quality housing available or call (512) 385-2077 to speak with a Home Consultant. Copyright 2017, CMH. All rights reserved.

<https://www.claytonhomesaustin.com>

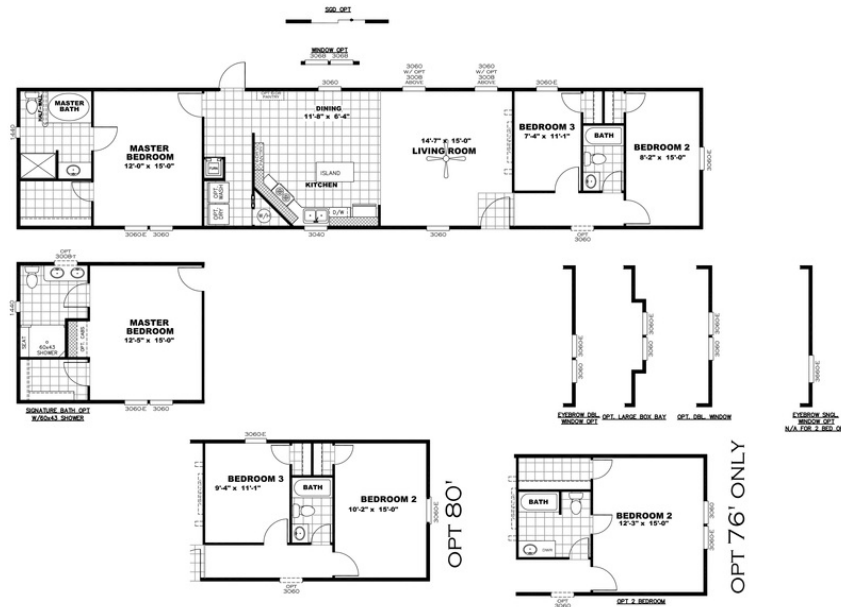
CLAYTON HOMES-AUSTIN

6801 E. BEN WHITE BLVD
AUSTIN, TX 78741

Monday - Thursday: By Appt. Only
Friday: By Appt. Only
Saturday: By Appt. Only
Sunday: Closed

(512) 385-2077





DRAWING # 31S122

MODEL# MXR16763A-N

16'x76' MAXIMIZER

HUGE SAVINGS ON DISPLAY LOT MODEL PRICED TO MOVE

Model number: 31MXR16763AH18

3 beds • 2 baths • 1216 sq.ft. • 16' width • 76' depth

Our home building facilities invest in continuous product and process improvements. Plans, dimensions, features, materials, specifications and availability are subject to change without notice or obligation. Renderings and floor plans are representative likenesses of our homes and may differ from the actual homes. We invite you to tour a Home Center near you and inspect the highest value in quality housing available or call (512) 385-2077 to speak with a Home Consultant. Copyright 2017, CMH. All rights reserved.

<https://www.claytonhomesaustin.com>

CLAYTON HOMES-AUSTIN

6801 E. BEN WHITE BLVD
AUSTIN, TX 78741

Monday - Thursday: By Appt. Only
Friday: By Appt. Only
Saturday: By Appt. Only
Sunday: Closed

(512) 385-2077